



# Weekly Report on COVID-19

COVID-19 සතිපතා වාර්තාව | COVID-19 வார அறிக்கை

**Issue 2021 : 17***This report is based on COVID 19 cases from last 14 days*

Period: 2021. 04. 16 to 2021. 04. 30

Published: 2021. 05. 01

## COVID 19 Situation since 1st of January 2020

	Case	Deaths
<b>Sri Lanka</b>	<b>108,146</b>	<b>678</b>

Source: www.epid.gov.lk : 2021. 04. 30 : 10.55 pm

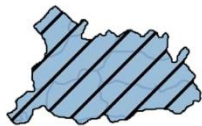
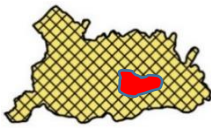
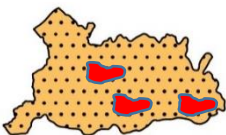

## New cases reported in NWP

	Kurunegala	Puttlam	NWP
<b>New cases reported from 2021. 04. 16</b>	<b>1,440</b>	<b>289</b>	<b>1,729</b>
<b>Total Cases from 2020. 10. 01</b>	<b>5,006</b>	<b>1,924</b>	<b>6,930</b>
<b>Total Deaths from 2020. 10. 01</b>	<b>69</b>	<b>20</b>	<b>89</b>

## COVID 19 Alert Related Definitions

### ❖ Proposed Regional Alert levels

(Localised adaptation based on Guideline number PA/DDGPHS ii/3/Covid/Gen/2020/ (Sub6) dated 03. 11. 2020 of Director General of Health Services) – See [http://www.health.gov.lk/moh\\_final/english/](http://www.health.gov.lk/moh_final/english/)

Proposed Regional Alert Level for MOH Division		
Number	Definition	Proposed functioning targeting minimizing the spread
<b>Regional Alert Level 1 MOH Division</b>	No active cases in the MOH Division	 Entire MOH division function as in national alert level. (Currently Alert 2-3)
<b>Regional Alert Level 2 MOH Division</b>	One GN Division (within or bordering) is having active case(s)	 - Designated GN area or a part of GN area to function as Level 4. - Other areas function as in national alert level (Currently Alert 2-.3)
<b>Regional Alert Level 3 MOH Division</b>	More than one GN Division (within or bordering) are having active case(s).	 - Designated GN area or a part of GN area to function as Level 4. - Other areas function as level 3
<b>Regional Alert Level 4 MOH Division</b>	Community spread within the Division.	 Entire MOH division to function as level 4.

❖ **Active Cases:** Cases became positive within last 14 days

❖ **High Risk GN areas:** GN area with one or more active cases.

**Active Cases:** Cases became positive within last 14 days

**High Risk GN areas:** GN area with one or more active cases.

## Distribution of OVID 19 Cases in Kurunegala District

MOH Division	Level	GN	Case
		<b>GN Areas with active cases</b> (Only the GN Divisions with active cases are shown)	
<b>ALAWWA</b>	Level 1	Galgamuwa South	1
		Henduwawa	2
		Henduwawa Colony	1
		Kandegedara North	1
		Maharachchimulla	1
		Miriheliya	1
		Paramaulla	1
		Vilgamuwa Watta	2
		Wennoruwa East	1
		Wennoruwa West	1
		Yatigaloluwa	2
<b>AMBANPOLA</b>	Level 1	Abakolawewa North	1
		Kirimetiya	1
		Udagama	1
<b>BAMUNAKOTUWA</b>	Level 3 (2 GN)	Hanhamunawa	2
		Kedapath Vehera	1
		Kelimune	2
		Mahakeliya	8
		Nawagatta	5
		Pahala Imiyangoda	1
		Panagamuwa	1
		Wedanda	2
<b>BINGIRIYA</b>	Level 2	Aluthgama	1
		Bakmeeruppa	1
		Bingiriya	4
		Bowatta	4
		Horagasagara	1
		Ihala Kadigamuwa	4
		Ihala Konkandawala	1
		Molaeliya	2
		Padiwela	3
		Pahala Galwewa	1
		Pahala Kadigamuwa	2
		Pahala Thalampola	2
		Tharana	3
		Weerapokuna	3
<b>GALGAMUWA</b>	Level 2	Atharagalla	1
		Bongama	2
		Ehetuwewa	2
		Molewa	2
		Mottapettewa	1

**Active Cases:** Cases became positive within last 14 days

**High Risk GN areas:** GN area with one or more active cases.

		Porottukadawala	1
		Ulpathagama	2
		Walaswewa	1
<b>GANEWATTA</b>	Level 3 <b>(1 GN)</b>	Aluthgama	1
		Jahapagama	1
		Moragolla	1
		Nikadalupotha	1
		Thittawelgala	137
<b>IBBAGAMUWA</b>	Level 2	Ambanpola	2
		Bogamuwa	1
		Daramitipala	2
		Dehelgamuwa	1
		Diyathure	1
		Kirindigalla	1
		Kumbalanga	1
		Mahagama	1
		Mahamookalanyaya	1
		Medamulla	1
		Neketta	1
		Nelliya	1
		Nindapella	1
		Pannala	1
		Siyambalawehera	1
Thammita	1		
<b>KOBEIGANE</b>	Level 2	Assedduma	3
		Bakunawala	1
		Boraluwewa	1
		Hengamuwa	1
		Kattapitiya	1
		Kobeigane	4
<b>KATUPOTHA</b>	Level 2	Alahitiyawa	2
		Barigoda	1
		Bogamulla	1
		Dalupothagama	1
		Deekirikewa	1
		Horombawa	4
		Medelpola	1
		Nakkawatta	2
		Polpitiya	1
Siyambalagaskotuwa	3		
<b>KULIYAPITIYA</b>	Level 3 <b>(24 GN)</b>	Anukkane	9
		Assedduma	46
		Bohingamuwa	5
		Dandagamuwa East	13
		Dandagamuwa West	12
		Deegalla	15
		Deeyawala	4
		Delana	9
		Diyadora	3

**Active Cases:** Cases became positive within last 14 days

**High Risk GN areas:** GN area with one or more active cases.

		Embawa	20
		Galahitiyawa	4
		Haggamuwa	3
		Hammalawa	1
		Ihala Elathalawa	5
		Ihala Galpola	1
		Ihala Kalugamuwa	14
		Ihala Piduma	3
		Ihala Weerambuwa	4
		Ilukhena	14
		Kabalewa	16
		Kandegedara	2
		Kirindawa	5
		Kithalawa	7
		Kongahagedara	2
		Kuliyapitiya Town	5
		Kumbalwala	4
		Kumbukkotuwa	1
		Kurudelpotha	17
		Madakumburumulla	3
		Meegahakotuwa	148
		Pahala Elathalawa	5
		Pahala Embawa	1
		Pahala Galpola	1
		Pahala Kalugamuwa	5
		Pahala Piduma	2
		Pahala Weerambuwa	8
		Pallewela	2
		Thabbomulla	3
		Thummodara	6
		Unaleeya	1
		Weralugama	6
		Wewagama	15
		Yakarawatta	5
<b>KURUNEGALA</b>	<b>Level 3 (7 GN)</b>	Akaragana North	1
		Akaragana South	1
		Alakoladeniya	1
		Attanapitiya	1
		Bamunawala	1
		Bamunugedara	8
		Boyagane	6
		Ginikarawa	2
		Henamulla	2
		Heraliyawala	7
		Kalatuwa Pelessa	1
		Kudumbuwa	2
		Mathawa	10
		Pahala Waraddana	3
Pubbowa	3		

**Active Cases:** Cases became positive within last 14 days

**High Risk GN areas:** GN area with one or more active cases.

		Rangama	7
		Rathgalla	4
		Seruwawa	1
		Thalvita	2
		Wehera West	5
		Wellawa	5
		Wilbawa	1
<b>KURUNEGALA MC</b>	<b>Level 3 (2 GN)</b>	Gangoda	10
		Gettuwana	1
		Iluppagedara	2
		Kurunegala Town - Bazaar	3
		Kurunegala Town - Central	2
		Kurunegala Town - North East	6
		Kurunegala Town - South	3
		Kurunegala Town - West	2
		Theliyagonna	1
		Udawalpola	2
<b>MAHO</b>	<b>Level 3 (3 GN)</b>	Atawarala	2
		Balagollagama	2
		Balalla	4
		Kirimetiya	1
		Liyanagama	1
		Mahawa West	7
		Nagollagama	2
		Nettipalagama	1
		Uduweriya	5
		Ullalapola	6
<b>MALLAWAPITIYA</b>	<b>Level 3 (1 GN)</b>	Bodhigama	2
		Doratiya	1
		Indulgoda	4
		Indulgoda Kanda	3
		Kahatapitiya	1
		Kowana	6
		Mallawapitiya	1
		Ranawana	1
		Thorayaya	2
		Wattegedara	1
<b>MASPOTHA</b>	<b>Level 3 (4 GN)</b>	Gonagama	1
		Gurulepola	2
		Hettigedara	1
		Kawdawatta	1
		Kudalgamuwa	2
		Maveedalupotha	1
		Minhettiya	1
		Pellandeniya	6
		Piduruwellegama	2
		Siyambalangamuwa	2
		Thithhawella	5
		Udabadalawa	23

**Active Cases:** Cases became positive within last 14 days

**High Risk GN areas:** GN area with one or more active cases.

		Wewagedara	8
<b>MAWATHAGAMA</b>	Level 2	Hettipola	1
		Hidagolla	2
		Kanduboda	3
		Malardeniya	1
		Mawathagama North	2
		Mawathagama West	1
		Metibokka	1
		Pilessa Pahalagama	1
		Uda Iguruwatta	1
		Wadiyagoda	3
		<b>NARAMMALA</b>	Level 3 <b>(1 GN)</b>
Dambagirigama East	2		
Dambagirigama West	1		
Dambagirigama West	13		
Handapangala	1		
Marandagolla	4		
Maravita	1		
Medagoda	1		
Metiyagane East	3		
Muthugala East	1		
Muthugala West	3		
Pahamune	1		
Puskoladeniya	2		
Riloluwa	2		
Udawelawatta	1		
<b>NIKAWERATIYA</b>	Level 2	Bogollagama	4
		Danduwwa	7
		Divullegoda	1
		Galapitiyagama	2
		Halmillewa	2
		Heelogama	1
		Hulugalla	1
		Katagamuwa	2
		Nikaweratiya North	2
		Nikaweratiya South	1
		Pahala Galapitiyagama	1
		Pinnapolegama	1
<b>PANDUWASNUWARA EAST</b>	Level 3 <b>(1 GN)</b>	Adukkane	3
		Angamuwa	1
		Anukkanhena	2
		Dematawa	1
		Kanapothuhera	4
		Kanogama	1
		Magulagama	1
		Medagama	1
		Moragane	2
Moragolla	3		
	Level 3	Akarawatta	1

**Active Cases:** Cases became positive within last 14 days

**High Risk GN areas:** GN area with one or more active cases.

<b>PANDUWASNUWARA WEST</b>	<b>(5 GN)</b>	Akurana	1
		Bandara Koswatta	5
		Dorabavila	2
		Dothella	1
		Epaladeniya	1
		Hathapola	6
		Hettipola	6
		Ihala Gomugomuwa	10
		Kamburapola	2
		Kevitiya	1
		Kotambapitiya	4
		Madaina	3
		Madige Midiyala	1
		Madige Midiyala	3
		Mandapola	1
		Moonamaldeniya	15
		Pihimbiya	1
		Rittadeniya	1
		Tekewa	1
		Udagama	1
Wadumunna	1		
<b>PANNALA</b>	<b>Level 3 (13 GN)</b>	Balawala	1
		Bammanna	2
		Bopitiya	18
		Bowatta	3
		Elabadagama East	2
		Elabadagama North	2
		Elabadagama West	6
		Elibichchiya	3
		Elivila	1
		Eriyagolla	12
		Gonulla East	1
		Gonulla West	3
		Hamangalla	2
		Hendiyagala	7
		Horawadunna	1
		Hundirapola	5
		Hunuville	4
		Ihala Galayaya	2
		Indivinna	3
		Ingaradavula	6
		Irabadagama	4
		Kadirapola	4
		Kandepola	2
		Kohombapola	10
Koodalupotta	2		
Kotuwella	1		
Madigepola	3		

**Active Cases:** Cases became positive within last 14 days

**High Risk GN areas:** GN area with one or more active cases.

		Maholawa	1
		Makandura Pahala	3
		Medirivila	5
		Mellawalana	2
		Nalawalana	2
		Narangoda North	5
		Narangoda South	4
		Nedalagamuwa North	3
		Nedalagamuwa South	1
		Pahala Labbala	2
		Pannala	7
		Panwalakumbura	4
		Paragammana	10
		Pethigodagedara	1
		Sandalankawa	9
		Thalammehera	2
		Thambakanda	5
		Thelambugammana	1
		Udugama	2
		Welpalla	2
		Yatattawala	1
		Yayamulla	2
<b>POLGAHAWELA</b>	Level 2	Godawela	1
		Hondella	1
		Imbulgoda	2
		Koradoluwa	1
		Parabewila	1
		Polgahawela North	1
		Wadakada	1
		Yogamuwakanda	1
<b>POLPITHIGAMA</b>	Level 3 <b>(1 GN)</b>	Baddegama	6
		Galketiyagama	1
		Galtenwewa	1
		Halmillawewa	4
		Keralankadawala	1
		Medakanda	1
		Welidalla	1
<b>RASNAYAKAPURA</b>	Level 3 <b>(1 GN)</b>	Agara Uda	1
		Kadigawa Track 1	1
		Rasnayakapura	7
<b>RIDEEGAMA</b>	Level 3 <b>(1 GN)</b>	Ambakote	1
		Buluwala	2
		Dodangaslanda	2
		Kosgollepola	4
		Medagama	2
		Morathiha	1
		Pihimbuwa	5
		Polwatta	3
Rideegama	1		

**Active Cases:** Cases became positive within last 14 days

**High Risk GN areas:** GN area with one or more active cases.

		Thelambugalla	1
		Welagedara	2
<b>UDUBADDAWA</b>	<b>Level 3 (3 GN)</b>	Ammanamulla	1
		Bibiladeniya	4
		Bunnehepola	1
		Dummalasooriya	5
		Dunukadeniya South	3
		Henegedara	1
		Horathepola	5
		Kahadenigama	3
		Kattimahana	1
		Mahaagara	2
		Nawasigahawatta	3
		Pahala Weerakodiyana	1
		Pahalagama	5
		Polgaha Agara	2
		Siyambalagasruppa West	2
Udadeniya	2		
<b>WARIYAPOLA</b>	<b>Level 3 (1 GN)</b>	Ebawalapitiya	1
		Habarawa	3
		Magulagama	3
		Malwana	8
		Mamunuwa	1
		Minuwangete	2
		Naramana	2
		Pattalegedara	2
		Thambarawa	1
		Wanduressa	1
		Wariyapola	1
		Welawa	2
		Werapola	3
		Wewagedara	1
<b>WEERAMBUGEDARA</b>	<b>Level 3 (1GN)</b>	Bulupitiya	1
		Galabadagama	1
		Huruggamuwa	2
		Kadadunna	1
		Kalugamuwa	2
		Kanumale	2
		Madawala North	1
		Pogalla	1
		Ranjanagama	4
		Uhumeeya	1
		Weerambugedara	6
<b>Total Cases, 5,006</b>			<b>1440</b>

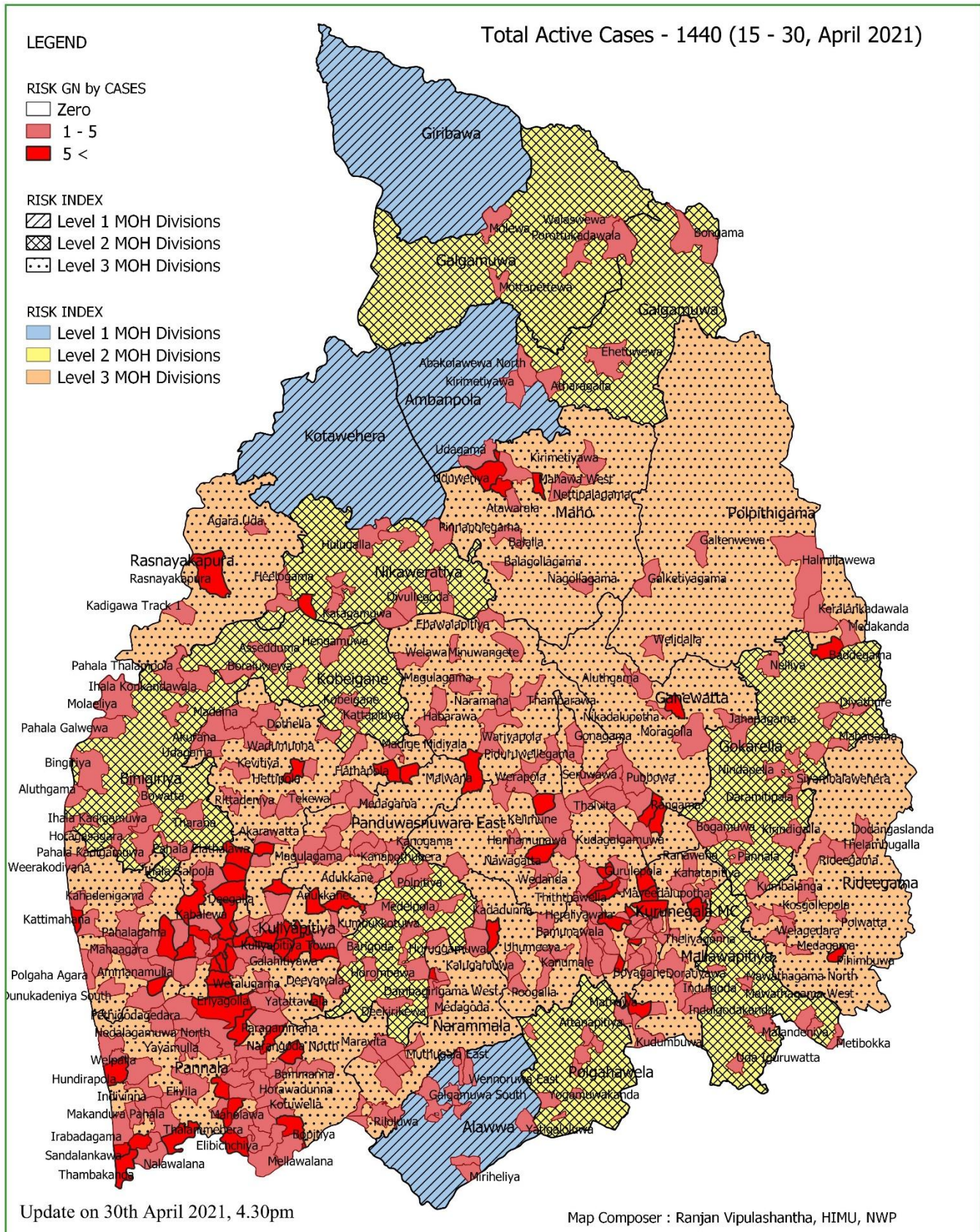
**Active Cases:** Cases became positive within last 14 days

**High Risk GN areas:** GN area with one or more active cases.

# COVID-19 Risk Level Map in Kurunegala District

Regional Risk level assessment based on last 14 days reported cases

(Period 16<sup>th</sup> April 2021 to 30<sup>th</sup> April 2021)



## Distribution of COVID 19 Cases in Puttlam District

MOH Division		GN Areas with active cases (Only the GN Divisions with active cases are shown)	
MOH	Level	GN	Case
Anamaduwa	Level 3 (2 GN Areas)	Anamaduwa	1
		Bammanegama	1
		Dharmapalaya	2
		Divulwewa	13
		Mudalakkuliya	8
		Thanmmennagama	3
Arachchikattuwa	Level 2	Adippala	1
		Arachchikattuwa East	2
		Battuluoya	1
		Nalladarankattuwa	3
		Rajakadaluwa	3
		Suruvila	1
		Wijayakatupatha	2
Chilaw	Level 3 (1 GN Areas)	Aluthwatta	2
		Ambakandavila	1
		Karawitagara West	2
		Kokkavila	2
		Maha Vilattawa	1
		Mugunuwatawana	8
		Munneshwaram	2
		Thimbilla	3
		Thittakade	1
		Wattakkaliya	2
		Weralabada North	1
Dankotuwa	Level 3 (6 GN Areas)	Bothalegama	3
		Dankotuwa West	1
		Dikwela	4
		Haldanduwana North	3
		Haldanduwana West	5
		Hundirapola	2
		Ihala Mohottimulla	2
		Kahatavila East	1
		Kahatavila West	3
		Kirimetiyan South	11
		Kirimetiyan West	2
		Lihiriyagama	7
		Meda Gonavila	2
		Meda Katukenda	1
		Mellawa	1
Metikotuwa	5		
Morukkuliya	6		
Motemulla	2		

**Active Cases:** Cases became positive within last 14 days

**High Risk GN areas:** GN area with one or more active cases.

		Pahala Mohottimulla	4
		Pothuwatawana	1
		Sendiriyamulla	7
		Yogiyana	2
<b>Kalpitiya</b>	<b>Level 3 (2 GN Areas)</b>	Kandakuliya	3
		Karamba	6
		Nawakkadu	2
		Norochchola	2
		Periyakudirippu	2
		Pudukudirippuwa	1
		Thalavila East	3
		Thalavila West	11
		<b>Karuwalagaswewa</b>	<b>Level 2</b>
Neliwewa (Paleegama)	1		
Thambapanniya	1		
<b>Madampe</b>	<b>Level 2</b>	Ihalagama	1
<b>Mahakumbukkadawala</b>	<b>Level 2</b>	Jayarajapura	1
		Kakupandiyawa	1
		Karuwalabedda	1
		Maha Kumbukkadawala	1
		Mohoriya	1
<b>Mahawewa</b>	<b>Level 2</b>	Halpanvila West	1
		Horagolla South	1
		Iranavila West	3
		Muttibendivila	1
		Panangoda	2
		Thalvila	1
<b>Mundalama</b>	<b>Level 2</b>	Angunavila	1
		Karathanvilluwa	1
		Kattakaduwa	3
		Mukkuthoduwawa	2
		Palasola	1
		Palli Wasalpaduwa	1
		Udappuwa	1
<b>Nattandiya</b>	<b>Level 3 (1 GN Areas)</b>	Dematapitiya	4
		Dukkannawa	1
		Ihala Kottaramulla	2
		Ihala Nattandiya	1
		Koswatta South	1
		Mailawa	1
		Maningala	1
		Meda Katuneriya	3
		Meda Mavila	1
		Meegahawewa	3
		Mudukatuwa East	1
		Mudukatuwa North	4
		Nakele	1
		Naravila	1
		Paluwelgala North	6
Thunmodara West	1		

**Active Cases:** Cases became positive within last 14 days

**High Risk GN areas:** GN area with one or more active cases.

		Yakadessawa	2
<b>Pallama</b>	Level 2	Thamarakkulama	1
		Wilpatha West	1
<b>Puttalam</b>	Level 2	Bodhirajapura	2
		Pottuvilluwa	1
		Puttalam North	1
		Puttalam South	1
		Rathmalyaya	1
		Thammannagama	1
		Mailankulama	2
<b>Wennappuwa</b>	Level 3 <b>(3 GN Areas)</b>	Bandirippuwa East	2
		Bandirippuwa North	1
		Bandirippuwa West	5
		Boralessa East	3
		Boralessa North	3
		Kadawatha	3
		Kolinjadiya West	2
		Lunuvila East	2
		Lunuwila West	1
		Meda Lunuwila	2
		Meda Nainamadama	2
		Nainamadama East	1
		Nainamadama West	7
		Ulhitiyawa South	6
		Waikkala South	3
		Wennappuwa West	2
		<b>Total Case , 1,924</b>	

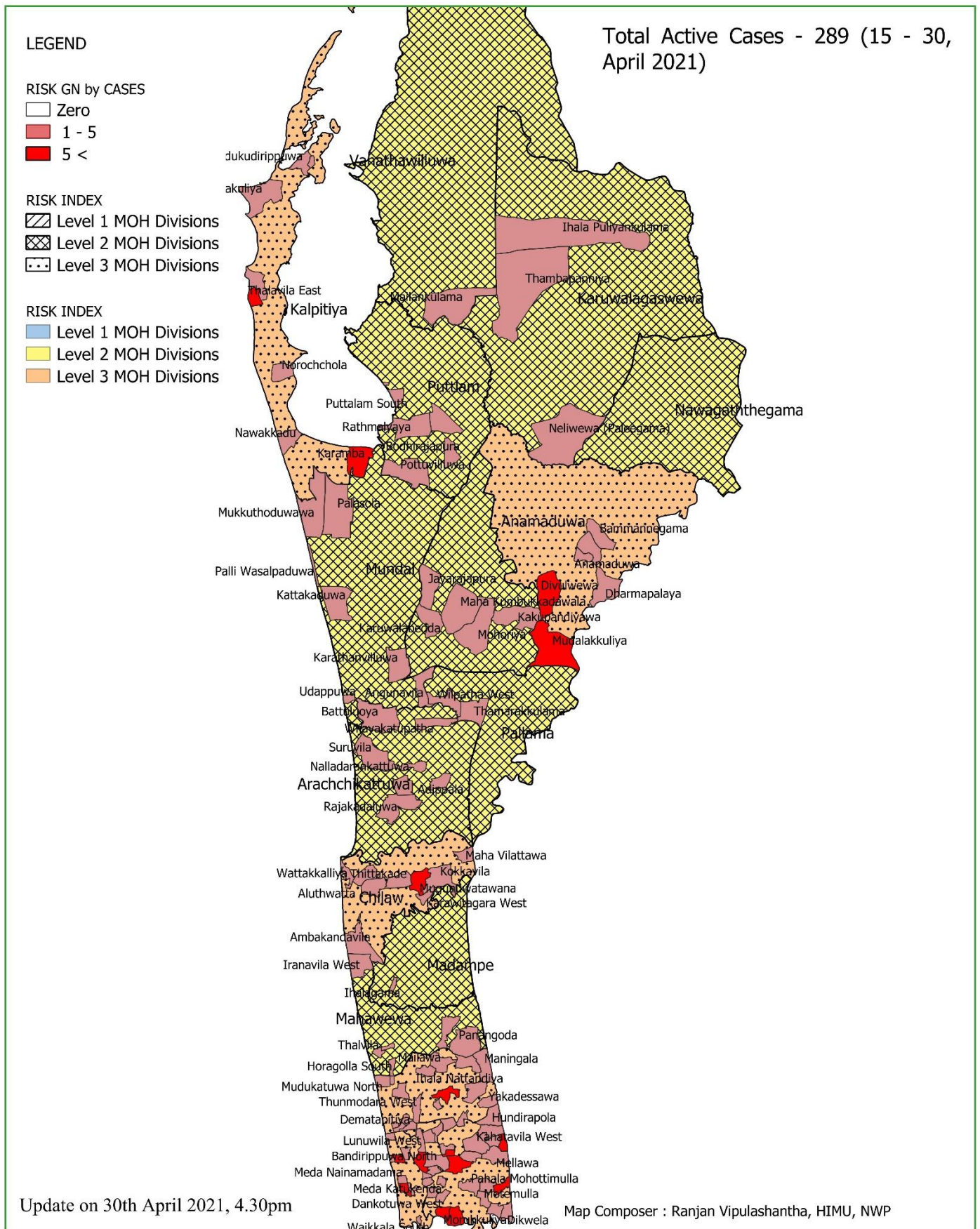
**Active Cases:** Cases became positive within last 14 days

**High Risk GN areas:** GN area with one or more active cases.

# COVID-19 Risk Level Map in Puttalam District

Regional Risk level assessment based on last 14 days reported cases

(Period 16<sup>th</sup> April 2021 to 30<sup>th</sup> April 2021)



## Distribution of Contacts under quarantine by MOH Divisions

In Kurunegala District (01. 01. 2021 – 14. 03. 2021)

SN	MOH Area	Total No Quarantined Since 2020. 10. 01	No of Contacts under quarantine
1	Alawwa	4447	260
2	Ambanpola	399	0
3	Bamunakotuwa	474	13
4	Bingiriya	1066	19
5	Galgamuwa	1346	64
6	Ganewaththa	810	30
7	Giribawa	689	12
8	Ibbagamuwa	3161	32
9	Katupotha	2578	11
10	Kobeigane	1428	18
11	Kotawehera	749	25
12	Kuliyapitiya	3683	35
13	Kurunegala	2131	27
14	Maho	864	6
15	Mallawapitiya	3684	27
16	Mawathagama	2420	95
17	MC Kurunegala	917	15
18	Narammala	2207	24
19	Nikawaratiya	1173	7
20	Panduwasnuwara-E	1640	95
21	Panduwasnuwara-W	3281	7
22	Pannala	10678	382
23	Polgahawela	4335	109
24	Polpithigama	3055	75
25	Rasnayakapura	309	7
26	Rideegama	2385	61
27	Udubaddawa	1765	12
28	Wariyapola	1528	25
29	Weerambagedara	1928	15
	<b>Total</b>	<b>6,5130</b>	<b>1,508</b>

*Date of Data Source: 2021. 03. 22*

**Active Cases:** Cases became positive within last 14 days

**High Risk GN areas:** GN area with one or more active cases.

## Distribution of Contacts under quarantine by MOH Divisions

In Puttlam District (15. 03. 2021)

SN	MOH Area	Total No Quarantined Since 2020. 10. 08	No of Contacts under quarantine
1	Anamaduwa		62
2	Arachchikattuwa		68
3	Chilaw		13
4	Kalpitiya		7
5	Karuwalagaswewa		13
6	Madampe		6
7	Mahawewa		9
8	Mundel		39
9	Nattandiya		21
10	Pallama		49
11	Puttlam		13
12	Wennappuwa		143
	<b>Total</b>		<b>443</b>

*Date of Data Source: 2021. 03. 15*

## Distribution of COVID 19 diagnosed patients in Healthcare Institutions

Treatment Centres and Intermediate Centres	Bed Capacity	Patient Number 2021. 05. 01 Midnight	Admission within Last Week (23/04/2021 – 30/04/2021)
<b>Kurunegala</b>			
BH Galgamuwa	33	-	
DH Ambanpola	50	35	
Dambadeniya Intermediate Care Centre	336	281	
DH Narammala	60	55	
Giriulla MAS	400	384	
<b>Total</b>	<b>879</b>	<b>755</b>	
Bingiriya Intermediate Care Centre	550	480	
Iranawila Treatment Centre	140	54	
DH Dankotuwa	77	72	
<b>Total</b>	<b>767</b>	<b>606</b>	
<b>Total of Province</b>	<b>1,646</b>	<b>1,361</b>	

**Note:** There could be discrepancy in data due to practical reasons. Any errors will be corrected and shown in next Issue.

## COVID 19 Specific Investigations

### PCR Activities

	Kurunegala		Puttlam		NWP
	Since 2020. 10. 01	Since 2021. 03. 158 to 2021. 03. 21	Since 2020. 10. 01	Since 2021. 03. 01 to 2021. 03. 14	
TH Kurunegala, TH Kuliyaipitiya	6,165	194	8,403	249	xx
PCR Sample Collected - In-ward + OPD	1,882	63			xx
PCR Sample Collected - Field	50,037	1,235	17,999	872	xx
<b>Total Sample Collected</b>	<b>58,084</b>	<b>1,492</b>	<b>26,402</b>	<b>1,129</b>	<b>84,007</b>

**Data Source:** Regional directorates of health services Kurunegala & Puttlam.

## COVISHIELD Vaccination Activities

District	Target (Total Health workers)	Vaccinated health workers
Puttlam	3,652	86%
Kurunegala	9,142	93%
<b>NWP</b>	<b>12,794</b>	<b>91%</b>

For further details, Contact

Telephone : +94 37 2223479 (Ext – 215)

+94 37 2225582 Fax : +94 37 2225581

eMail : [ccpnwp2014@gmail.com](mailto:ccpnwp2014@gmail.com), [info@healthdept.nw.gov.lk](mailto:info@healthdept.nw.gov.lk)

Web : [www.healthdept.nw.gov.lk](http://www.healthdept.nw.gov.lk)

